



Poudre School District
Bethke Elementary School

New Parent Orientation

Ann Alfonso and Jay Gallagher

Honoring All Learners

What We'll Cover

- ▶ **Who's Who at Bethke**
 - ▶ Administrative Staff
 - ▶ Teachers
 - ▶ Support Staff
 - ▶ Clubs
 - ▶ PTO
- ▶ **Events Throughout the Year**
- ▶ **Everyday Life at Bethke**
- ▶ **Keeping Bethke Great**
- ▶ **Nice to Know**

Who's Who at Bethke

▶ Administration Office

- ▶ Ann Alfonso: Principal
- ▶ Jay Gallagher: Assistant Principal
- ▶ Jill Brase: School Secretary/Registrar
- ▶ Jenny Milette: Health Tech
- ▶ Kim Williamson: Nurse-RN
- ▶ Jeri Mill: Office Manager

Who's Who at Bethke

▶ Kindergarten

- ▶ Jennifer Busselman
- ▶ Julie Kalvels
- ▶ Alison Ricks
- ▶ Christina Eddy
- ▶ Felica Gephart

▶ 1st Grade

- ▶ Monet Hause
- ▶ Kassie Harras
- ▶ Ashley Carlucci
- ▶ Jenna Berger

▶ 2nd Grade

- ▶ Julie Beaven
- ▶ Rachel Crawford
- ▶ Tracy Berg
- ▶ Michelle Haselby

▶ 3rd Grade

- ▶ Erin Vigil
- ▶ Laura Boggs
- ▶ Stephanie Fennimore
- ▶ Leigh Ann Eucker
- ▶ Katie Hastings

Who's Who at Bethke

▶ 4th Grade

- ▶ Jamie Drage
- ▶ Alex Wedemeyer
- ▶ Kirsten Wilson
- ▶ Kathy Samples
- ▶ Amy Mocke

▶ 5th Grade

- ▶ Stacy Gunstream
- ▶ Bethany Rayls
- ▶ Lisa Rossi
- ▶ Brad Tarr
- ▶ Caitlyn Moore

▶ **Specials Teachers**

- ▶ Lydia Richardson: Art
- ▶ Allison Adams: Music
- ▶ Terri Keyworth: Physical Education
- ▶ Katie Newman: Media/Tech

Who's Who at Bethke

▶ **Support Staff**

- ▶ Bri Schupp and Carla Hewitt: Literacy
- ▶ Deborah Meng: Math Interventionist
- ▶ Lauren Pegg: Math Interventionist
- ▶ Jen Dickey: GT Coordinator
- ▶ Christie McPhail: School Counselor
- ▶ Courtney Hill: School Psychologist
- ▶ Kelli Hill: Integrated Services
- ▶ Margaret Weisenbach: Integrated Services
- ▶ Joe Stele: Custodian
- ▶ Kim Fausto: Cafeteria Manager

Who's Who at Bethke

*Look for sign-up sheets at
Back-to-School Night and in
your child's Friday Folder*

▶ Clubs-Coordinated by Jill Brase, registrar

- ▶ Spanish – Office
- ▶ Odyssey of the Mind – Office
- ▶ LEGO Robotics – Mrs. Newman
- ▶ Chess Club – Office
- ▶ Choir, Grades 4th--5th – Mrs. Adams
- ▶ Art Clubs – Mrs. Richardson
- ▶ School Store-Mrs. Drage
- ▶ Kids Care Club-Mrs. Haselby and Mrs. Berger

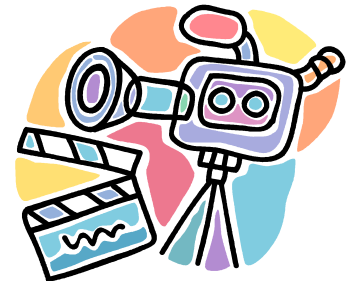


Who's Who at Bethke

*Look for sign-up sheets at
Back-to-School Night and in
your child's Friday Folder*

▶ Clubs-Coordinated by Jill Brase, registrar

- ▶ Science Matters – Office
- ▶ K-BOB Morning News– Mrs. Newman
- ▶ Yearbook-Mrs. Pegg
- ▶ School Newspaper-Ms. Wilson
- ▶ Tech Clubs- Mrs. Newman
- ▶ Fitness Clubs-Mrs. Keyworth



Who's Who at Bethke

▶ PTO Board

- ▶ President: Jill Maasch
- ▶ Vice President: Leea Guy
- ▶ Secretary: Lisa Laake
- ▶ Treasurer: Naima Haddad-Gomez
- ▶ Asst. Treasurer: We need one!
- ▶ Volunteer Coordinator: Lynne Diaz

Who's Who at Bethke

▶ PTO Committees

▶ Bethke and Student Activities

- ▶ Copy Room
- ▶ Staff Appreciation
- ▶ Book Fair
- ▶ Box Tops
- ▶ Original Art
- ▶ Golf Tournament



Security at Bethke



Bethke Events

▶ **Fall**

- ▶ Back to School Night – Thurs, August 30 4-6pm
 - ▶ Teachers provide overview of grade level curriculum
 - ▶ Each hour is an identical presentation
- ▶ Wellness Day– Friday, September 14th
- ▶ Golf Tournament- Friday, September 14th
- ▶ Fall Social – TBD
- ▶ Halloween Parade – October 31st
 - ▶ Kids wear their costume to school, bring clothes to change into
 - ▶ Parents can watch the parade outside on the playground

Bethke Events

▶ **Winter**

- ▶ Spelling Bee (4 /5 Grade) – Jan 18th at 2pm
 - ▶ Parents are welcome to attend
- ▶ “Spring” Break – March 18th-22nd

Bethke Events

▶ **Spring**

- ▶ Scooter Club
 - ▶ Before and after school
 - ▶ Students earn prizes based on the number of completed laps
- ▶ Spring Showcase – April 26th
- ▶ Eco Week – May 22nd-24th
- ▶ Field Day – May 16th
 - ▶ Parents can observe the fun and games, or join for picnic lunch

Bethke Events

- ▶ **New Parent Breakfasts**-hosted by Bethke moms
 - ▶ One morning a month in the cafeteria with Jessica Perez
- ▶ **Coffee Talks**
 - ▶ Held throughout the year by grade: K, Sept. 4
 - ▶ Chance to talk to Mrs. Alfonso, Mr. Gallagher, and Mrs. McPhail about what is going well, what questions you have
- ▶ **Conferences**
 - ▶ Fall – sign up at Back to School Night
 - ▶ Spring-as necessary
 - ▶ Anytime you have questions/concerns

Bethke Events: Music

▶ **Monthly Concerts**

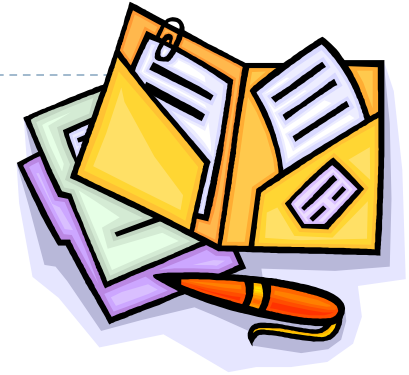
- ▶ 5th Grade Program---October 25th
- ▶ 4th Grade Program---November 15th
- ▶ 3rd Grade Program---February 21st
- ▶ 2nd Grade Program—March 28th
- ▶ 1st Grade Program---April 18th
- ▶ Spring Choir Concert—2nd
- ▶ Kindergarten Celebration—May 29th



Everyday Life at Bethke

▶ How You Can Get Information

- ▶ Friday Folders
 - ▶ Send folder back to school on Monday morning!
- ▶ Update Emails from Ann Alfonso, PTO Board
 - ▶ Make sure email is up to date in the office
- ▶ Monthly Bethke Newsletter
- ▶ Weekly / Bi-Weekly Teacher Newsletters
- ▶ Bethke Website (www.bethkeelementary.com)
- ▶ Follow Bethke on Facebook/Twitter
 - ▶ (See instructions on following page for Facebook)



follow us on
twitter



Everyday Life at Bethke

▶ How You Can Get Information (continued)

▶ How to Follow Bethke on Facebook

- ▶ If not currently a member, requires that you join Facebook
- ▶ Search for “Bethke Elementary”, Go to Bethke Facebook Page
- ▶ Click on the “Like” Button
 - This allows updates to be posted on your Wall
 - This does NOT befriend all the people that follow Bethke



facebook Home Pro

Bethke Elementary School Like

Wall Info Photos Discussions

Bethke Elementary School + Others **Bethke Elementary School** Just Others

Bethke Elementary School
Back to School Night Back to School Night is this Thursday, August 26 from 5-7. Come to either session at 5:00 or 6:00 in your child's classroom to learn about this year's routines, curriculum, and upcoming events! Stop by the specials teachers rooms and sign up for volunteer opportunities ...
See More
21 hours ago via twitterfeed · Share this

Suggest to Friends

Bethke Elementary School opened in fall of 2008. The school is named for

Everyday Life at Bethke

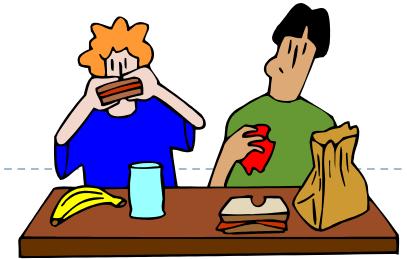
▶ **How You Can Get Information (continued)**

- ▶ Listen to Daily K-Bob Show
 - ▶ Subscribe on iTunes

- ▶ Watch Student and Classroom Videos
 - ▶ <http://www.schooltube.com/user/bethkeelementary>
 - ▶ <http://www.youtube.com/user/bethkeelementary>

- ▶ Ask!
 - ▶ Administrative Staff, Classroom Coordinators
 - ▶ PTO Officers, Other Parents

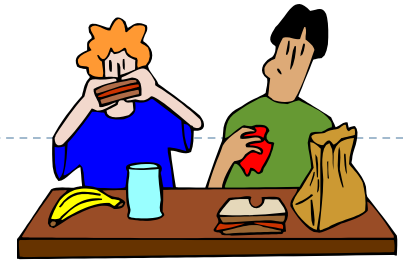
Everyday Life at Bethke



▶ Food

- ▶ Send 1-2 snacks to school with your child; water bottle
- ▶ Lunch
 - ▶ There is a 'nut free' table for students with allergies
 - ▶ Cafeteria menu published monthly
 - Included with Bethke Newsletter and Posted on website
 - ▶ Pay for lunch
 - Use Student Snapshot (Parent Portal) on PSD website
 - Can set a low balance reminder; funds added before 9:00 am reflect that day
 - Can view your student's cafeteria usage
 - Or, bring cash / check to the Cafeteria Manager/Bring own lunch
 - You will need your child's student ID (see front office if you don't know it)
 - ▶ A blue Bobcat stamp means your child has two lunches left
 - ▶ Cafeteria is FULL, eating in the hallways is not allowed

Everyday Life at Bethke



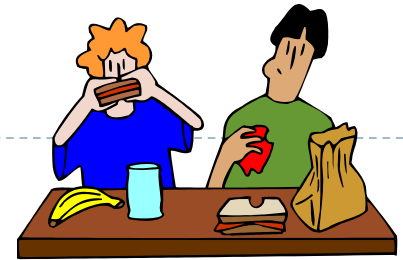
▶ **Food (continued)**

- ▶ Students have recess immediately prior to lunch
- ▶ Check in to office before coming
- ▶ Schedule:
 - ▶ K: Recess at 11:00; Lunch at 11:20-11:45
 - ▶ 1: Recess at 11:15; Lunch at 11:40-12:00
 - ▶ 2: Recess at 11:35; Lunch at 12:00-12:20
 - ▶ 3: Recess at 11:55; Lunch at 12:20-12:40
 - ▶ 4: Recess at 12:15; Lunch at 12:40-1:00
 - ▶ 5: Recess at 12:35; Lunch at 1:00-1:20

Everyday Life at Bethke

▶ **Bethke Wellness Policy**

- ▶ Happy Birthday, Let's Move
- ▶ Classroom Parties
 - ▶ Balanced treats vs healthy
 - ▶ Food must be store bought
 - ▶ Nothing homemade



Everyday Life at Bethke

▶ Drop Off and Pick Up

- ▶ Use right lane only
- ▶ Stay in your car
 - ▶ If your child needs help entering or exiting the car, park your car in a parking space and then help them
- ▶ Use the red curb as your guide
 - ▶ When arriving, pull up as far as you can by the red curb
 - The furthest point is beyond the crosswalk
 - ▶ Only let students in/out of car if you are at the red curb
- ▶ Leave promptly after loading students
 - ▶ Don't wait to watch them walk to the playground
- ▶ Do not park by the red line. Timnath will ticket cars in the red zone.



Everyday Life at Bethke

▶ **When Parking . . .**

- ▶ Park in a parking spot
 - ▶ Don't "idle" in the middle of the lot
- ▶ When crossing the road, ensure you use the white cross walk
- ▶ Do not park by the red line. Timnath tickets cars.

▶ **Need to Change Pick Up Process?**

- ▶ Contact Jill Brase
 - ▶ Send note to school; contact school early in the day
 - ▶ Bus Passes required if a friend is coming home with your child
 - ▶ Fifth grade bus buddies with kindergarten students



Everyday Life at Bethke

▶ **Arriving Late**

- ▶ If you know student will be arriving late, notify the school in advance if possible (leave a message on attendance line)
- ▶ When arriving at school, parent will need to sign child in at the front office and receive a pass

▶ **Leaving Early**

- ▶ If possible, notify the school in advance
- ▶ Send in a note or contact front office
- ▶ Parent or guardian will need to sign-out student

▶ **Absences**

- ▶ Contact School via phone or e-mail
 - ▶ Attendance line: 488-4301 24/7: Please use this!!!
 - ▶ email: jbrase@psdschools.org

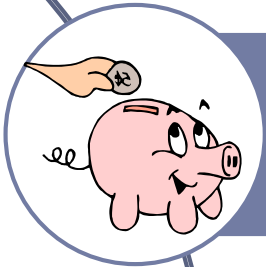
Everyday Life at Bethke



▶ **Medicine**

- ▶ Provide medication(s) to health office
 - ▶ Inhalers
 - ▶ Allergy pens
 - ▶ Over-the-counter meds (Claritin, Tylenol, cough drops, etc)
 - ▶ Prescription medications
- ▶ Requires a signed form from the child's Doctor
 - ▶ States that the child does require the medication
 - ▶ Health office can provide form for Doctor to sign

How Parents Help Keep Bethke Great



Participate in the Pledge



Volunteer in many ways



Capture Money Spent in the Community

Participate in Pledge

- ▶ **Primary Fundraising Vehicle for Bethke**
 - ▶ No “Door-to-Door” Sales
 - ▶ No requests to buy magazines, popcorn, wrapping paper

- ▶ **Parents Asked to Make Annual Contribution**
 - ▶ Aiming for 100% Participation
 - ▶ Suggested Contribution: \$100 per Student
 - ▶ But Do the Amount that Makes Sense for Your Economic Situation
 - ▶ Any Amount is Helpful to the School

Participate in Pledge

▶ **The PTO Pledge pays for:**

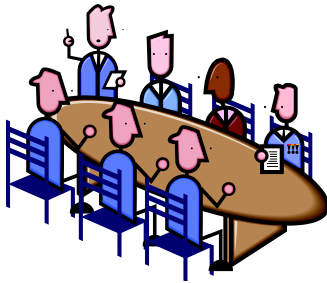
- ▶ All Field Trips - \$12,000 (\$2000 for each grade)
- ▶ Student Planners - \$3000
- ▶ Xerox paper for the building-\$3000
- ▶ Furniture for the growth-\$5000
- ▶ Technology refresh as building ages-\$5000
- ▶ Classroom Stipends and Grants – over \$17,000
 - ▶ \$300 Stipends Given to Each Teacher (prizes, supplies)
 - ▶ Past Grants Covered Digital USB Microscopes, Colorado Children Book Award Nominees for Library, Books for enhancing Core Curriculum, Flip Videos, Incubation cages, Equipment, Tables
- ▶ Assemblies, Staff Appreciation, Social Events

▶ **Please pay by check made out to Bethke PTO**

- ▶ 29 ▶ You can make a one time donation or monthly installments

Volunteer at the School

Participate on a Committee



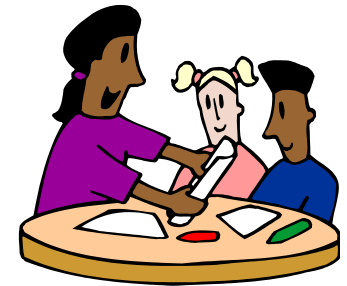
Complete List
Available on Web

Help at School-Wide Events



PTO Socials
Book Fairs
Field Day

Volunteer With Your Classroom



Centers
Parties
Field Trips
Staff Appreciation



To Volunteer,

1) Need to Register with PSD

Parents, grandparents, and other relatives can volunteer

2) Sign In at Computer Each Time You Come In

3) Wear Your Name Badge-put picture on it!

Capture Money Spent in the Community

▶ **Support Bethke in Your Everyday Life**

- ▶ Collect Box Tops, Morning Fresh Dairy Caps
- ▶ Put in bag, mark with student and teacher's name, and put in container located inside the main entrance to Bethke
- ▶ Participate in the Affinity Programs-watch for fliers
 - ▶ Restaurants
 - ▶ Product Sales at a discount
 - ▶ Activities
- ▶ Participate in our Golf Tournament, September 14

Nice to Know

▶ **School Directory**

- ▶ Includes phone, email, and address
- ▶ Published by PTO
- ▶ For the use of Bethke parents only
- ▶ May choose what information to include

Must Know for First Week

- ▶ **If you're a bus rider, please ride! If your house is being built, when you move in we give you a bus pass.**
 - ▶ **Bus lane/back parking lot-do not park in the back!**
 - ▶ **Drop off lane vs parking in the parking lot**
 - ▶ **Use Crosswalks!**
 - ▶ **Teacher's name will be written in chalk on playground**
 - ▶ **Nut free table/classrooms**
 - ▶ **You will get teacher schedules at Open House**
 - ▶ **Put money into your child's lunch account!**
 - ▶ **Don't count on email. Call if really important. Use teacher's phone number instead of front office.**
-
- ▶ **3B Basecamp will be in the cafeteria. They pick up kids**

Questions?

- ▶ **We're glad you're here! 😊 Let's make it a great year!**

