



Poudre School District
Bethke Elementary School

**17 years of Honoring All Learners
2023 PLC School at Work Award
2024 John Irwin and Governor's Award of Distinction**

**New Parent Orientation
Ann Alfonso and Luke Jones**

HONORING ALL LEARNERS

At **Bethke** we will...

Be
Our
Best, &
Choose
Actions
That
Show...



RESPECT

- Listen to the speaker
- Use our manners

RESPONSIBILITY

- Keep hands & bodies safe
- Follow staff directions

INTEGRITY

- Speak truthfully
- Own our choices

KINDNESS

- Think before we speak
- Take care of each other



What We'll Cover

- ▶ **Who's Who at Bethke**
 - ▶ Administrative Staff
 - ▶ Teachers
 - ▶ Support Staff
 - ▶ Clubs
 - ▶ PTO
- ▶ **Events Throughout the Year**
- ▶ **Everyday Life at Bethke**
- ▶ **Keeping Bethke Great**
- ▶ **Nice to Know**

Who's Who at Bethke

▶ **Administration Office**

- ▶ Ann Alfonso: Principal
- ▶ Luke Jones: Assistant Principal
- ▶ Heather Gasser: Office Manager
- ▶ Denise Galvez: Secretary/Registrar
- ▶ Sam Prissel: Health Tech
- ▶ Kim Williamson: Nurse-RN

Who's Who at Bethke

▶ Kindergarten

- ▶ Jennifer Busselman
- ▶ Julie Kalvels
- ▶ Christina Eddy
- ▶ Katie Augustine

▶ 1st Grade

- ▶ Monet Hause
- ▶ Alison Ricks
- ▶ Ashley Carlucci

2nd Grade

- ▶ Julie Beaven
- ▶ Michelle Haselby
- ▶ Jenna Berger

▶ 3rd Grade

- ▶ Jordyn Bohm
- ▶ Kim Voelker
- ▶ Alex Wedemeyer
- ▶ Tracy Berg

Who's Who at Bethke

▶ 4th Grade

- ▶ Brad Tarr
- ▶ Kirsten Wilson
- ▶ Kathy Samples
- ▶ Amy Mocke

▶ 5th Grade

- ▶ Jamie Drage
- ▶ Stephanie Fennimore
- ▶ Jake Owens
- ▶ Emily Albertson

▶ **Specials Teachers**

- ▶ Lydia Richardson: Art
- ▶ Allison Adams: Music
- ▶ Melissa Lang: PE
- ▶ Stacy Gunstream: Media

Who's Who at Bethke

▶ **Support Staff**

- ▶ Rachel Crawford and Carla Hewitt: Literacy
- ▶ Lauren Pegg: Math Interventionist
- ▶ Renee McClure: GT and ELD
- ▶ Christie McPhail: School Counselor
- ▶ Jenni Thomason: School Psychologist
- ▶ Alexa Bradley: Integrated Services
- ▶ Emmy Egan: Integrated Services
- ▶ Marco Cesar Ortmann: Custodian

Who's Who at Bethke

*Look for sign-up sheets at
Back-to-School Night and in
your child's Friday Folder*

▶ Clubs-Coordinated by front office

- ▶ Odyssey of the Mind – Mrs. McClure
- ▶ Chess Club – Office
- ▶ Choir, Grades 4th--5th – Mrs. Adams
- ▶ Art Clubs – Mrs. Richardson
- ▶ Science Matters – Office
- ▶ Tech Clubs- Ms. Gunstream
- ▶ Fitness Clubs-Ms. Lang
- ▶ Girls on the Run-Ms. Wedemeyer
- ▶ NOCO Enrichment Clubs



Who's Who at Bethke

▶ PTO Board

- ▶ President: Rebecca Hansen
- ▶ Vice President: Tonya Ritchey
- ▶ Secretary: Rachel Wood
- ▶ Treasurer: April Mellon
- ▶ Fundraising Chair: Tiffany Kunau
- ▶ Advisor: Ally Ruggiero

Who's Who at Bethke

▶ **PTO Committees**

- ▶ Look for volunteer link in Open House Email
 - ▶ Copy Room
 - ▶ Bobcat Dash
 - ▶ Staff Appreciation
 - ▶ Book Fair
 - ▶ Box Tops
 - ▶ Original Art
 - ▶ Socials
 - ▶ School Kits
 - ▶ Milk Caps
 - ▶ Spirit Wear
 - ▶ Holiday Shop
 - ▶ Friday folders

Security at Bethke

- ▶ All doors locked all day
- ▶ Ring doorbell to enter
- ▶ Raptor volunteer system
- ▶ Fence locked all day
- ▶ Security cameras in use
- ▶ **ALL VISITORS ENTER THROUGH THE FRONT DOOR**
- ▶ Regular drills practicing routines
- ▶ Dedicated SRO for TMHS, TES and BET
- ▶ Timnath patrol officers random walks

Bethke Events

▶ **Fall**

- ▶ Back to School Night – Thurs, August 21
 - ▶ Teachers provide overview of grade level curriculum
 - ▶ Each hour is an identical presentation
- ▶ Wellness Day Bobcat Dash-August 29
- ▶ Trunk or Treat-October 24
- ▶ Halloween Parade – October 31st
 - ▶ Kids wear their costume to school, bring clothes to change into
 - ▶ Parents can watch the parade outside on the playground

Bethke Events

▶ **Winter**

- ▶ Purposely don't schedule a lot in December since families are busy
- ▶ Spelling Bee (4 /5 Grade) – December

Bethke Events

▶ **Spring**

- ▶ Spring Break March 16-20
- ▶ Spring Social – May 1st
- ▶ Field Day – May 14th
 - ▶ Parents can observe the fun and games, or join for picnic lunch

Bethke Events

- ▶ **Coffee Talks**

- ▶ Held throughout the year by grade: K, Aug. 25
- ▶ Chance to talk to Mrs. Alfonso and counselors about what is going well, what questions you have

- ▶ **Conferences**

- ▶ Fall –sign up Genius
- ▶ Spring-as necessary
- ▶ Anytime you have questions/concerns

Bethke Events: Music

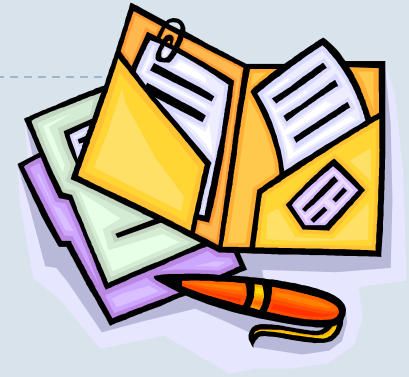
▶ **Monthly Concerts**

- ▶ 5th Grade Program---October 23
- ▶ 4th Grade Program---November 13
- ▶ 3rd Grade Program---February 26
- ▶ 2nd Grade Program—March 26
- ▶ 1st Grade Program---April 16
- ▶ Kindergarten Celebration—May 26
- ▶ Show Choir-May 7
- ▶ Talent Show-January 29

Everyday Life at Bethke

▶ How You Can Get Information

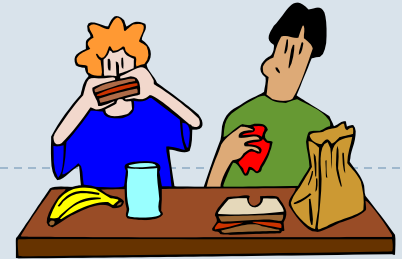
- ▶ Friday Folders
 - ▶ Send folder back to school on Monday morning!
- ▶ Update Emails from Ann Alfonso, PTO Board
 - ▶ Make sure email is up to date in the office
- ▶ Monthly Bethke Newsletter
- ▶ Weekly / Bi-Weekly Teacher Newsletters
- ▶ Bethke Website (www.bethkeelementary.com)
- ▶ Follow Bethke on Facebook/Instagram
 - ▶ (See instructions on following page for Facebook)



follow us on
twitter

f Find us on
Facebook

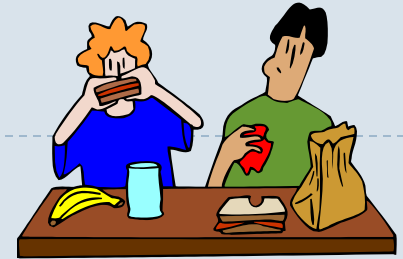
Everyday Life at Bethke



▶ Food

- ▶ Send 1-2 snacks to school with your child; water bottle
- ▶ Breakfast and Lunch-Free for all students
 - ▶ There is a 'nut free' table for students with allergies
 - ▶ Cafeteria menu published monthly
 - Included with Bethke Newsletter and Posted on website
 - ▶ Cafeteria is FULL-no room for parents
 - ▶ Parents are allowed to come take child out for lunch/eat outside

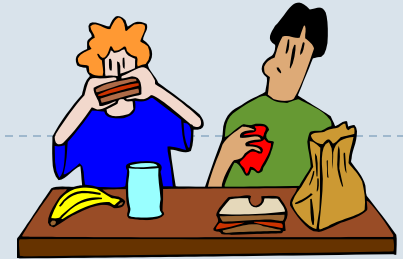
Everyday Life at Bethke



► Food (continued)

- Hands will be washed with soap in classrooms first
- No parents in the cafeteria
- Schedule:
 - K: Lunch 10:50-11:15
 - 1: Lunch 11:15-11:40
 - 2: Lunch 11:40-12:05
 - 3: Lunch 12:05-12:30
 - 4: Lunch 12:30-12:55
 - 5: Lunch 12:55-1:20

Everyday Life at Bethke



▶ **Bethke Wellness Policy**

- ▶ Happy Birthday, Let's Move-please do not send in food!
- ▶ Classroom Parties
 - ▶ Balanced treats vs healthy
 - ▶ Food must be store bought
 - ▶ Nothing homemade

Everyday Life at Bethke

- ▶ **Drop Off and Pick Up-FRONT ONLY**
 - ▶ **No parking in east (back) lot. Busses only.**
 - ▶ Use right lane only-keep moving
 - ▶ Stay in your car
 - ▶ If your child needs help entering or exiting the car, park your car in a parking space and then help them
 - ▶ Use the red curb as your guide
 - ▶ When arriving, pull up as far as you can by the red curb
 - The furthest point is beyond the crosswalk
 - ▶ Only let students in/out of car if you are at the **red curb**
 - ▶ Leave promptly after loading students
 - ▶ Don't wait to watch them walk to the playground
 - ▶ Do not park by the red line. Tell caregivers and grandparents



Everyday Life at Bethke



▶ **When Parking . . .**

- ▶ Park in a parking spot
 - ▶ Don't "idle" in the middle of the lot
- ▶ When crossing the road, ensure you use the white cross walk
- ▶ Do not park by the red line. Timnath police tickets cars.

▶ **Need to Change Pick Up Process?**

- ▶ Contact front office
 - ▶ Send note to school; contact school early in the day
 - ▶ Bus Passes required if a friend is coming home with your child
 - ▶ Bus pass only if on the same bus. Not different busses.

Everyday Life at Bethke

▶ Arriving Late

- ▶ If you know student will be arriving late, notify the school in advance if possible (leave a message on attendance line)
- ▶ When arriving at school, parent will need to sign child in at the front office and receive a pass

▶ Leaving Early

- ▶ If possible, notify the school in advance
- ▶ Send in a note or contact front office
- ▶ Parent or guardian will need to sign-out student

▶ Absences

- ▶ Contact School via phone or e-mail-don't count on just email
 - ▶ **Attendance line: 488-4301 24/7: Please use this!!!**

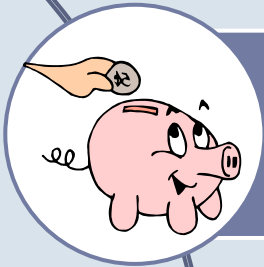
Everyday Life at Bethke



▶ **Medicine**

- ▶ Provide medication(s) to health office
 - ▶ Inhalers
 - ▶ Allergy pens
 - ▶ Over-the-counter meds (Claritin, Tylenol, cough drops, etc)
 - ▶ Prescription medications
- ▶ Requires a signed form from the child's Doctor
 - ▶ States that the child does require the medication
 - ▶ Health office can provide form for Doctor to sign

How Parents Help Keep Bethke Great



Participate in the Bobcat Dash!



Volunteer in many ways



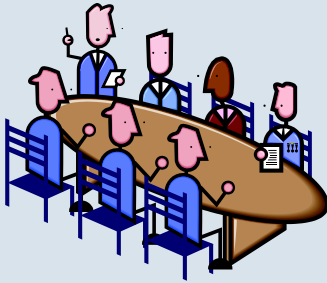
Capture Money Spent in the Community

Participate in Fun Run!

- ▶ **The PTO annual budget pays for:**
 - ▶ All Field Trips - \$12,000 (\$2000 for each grade)
 - ▶ Student Planners - \$2100
 - ▶ Copy paper for the building-\$4000
 - ▶ Classroom Stipends and Grants – over \$16,000
 - ▶ \$300 Stipends Given to Each Teacher (prizes, supplies)
 - ▶ Past Grants Covered Digital USB Microscopes, Colorado Children Book Award Nominees for Library, Books for enhancing Core Curriculum, Flip Videos, Incubation cages, Equipment, Tables
 - ▶ Picnic tables, Staff Appreciation, Social Events, Sun Sail Shade
- ▶ **Pledge: make check payable to Bethke or School Pay**
 - ▶ You can make a one time donation in lieu of fun run

Volunteer at the School

Participate on a Committee



Look for volunteer link coming home soon.

Help at School-Wide Events



PTO Socials
Book Fairs
Field Day

Volunteer With Your Classroom



Centers
Parties
Field Trips
Staff Appreciation



To Volunteer,

1) Need to Register with PSD

Parents, grandparents, and other relatives can volunteer

2) Check in with front office staff each time

Capture Money Spent in the Community

▶ **Support Bethke in Your Everyday Life**

- ▶ Collect Box Tops, Morning Fresh Dairy Caps, AFW
- ▶ Shop at King Soopers
- ▶ Participate in the spirit nights-watch for fliers
 - ▶ Restaurants
 - ▶ Product Sales at a discount
 - ▶ Activities
 - ▶ School earns a percentile of sales

Nice to Know

▶ **School Directory**

- ▶ Includes phone, email, and address
- ▶ Published by PTO
- ▶ For the use of Bethke parents only
- ▶ May choose what information to include
- ▶ Look for link coming home in Open House email

Must Know for First Week

- ▶ If you're a bus rider, please ride! If your house is being built, when you move in we give you a bus pass.
- ▶ **Bus lane/back parking lot-do not park in the back!**
- ▶ Drop off lane vs parking in the parking lot
- ▶ Use Crosswalks!
- ▶ Teacher's name will be written in chalk on playground
- ▶ Nut free table/classrooms
- ▶ You will get teacher schedules at Open House
- ▶ Don't count on email. Call if really important. Use teacher's phone number instead of front office.
- ▶ Alphabest will be in the cafeteria. They pick up kids from their classrooms the first few weeks.

Questions?

- ▶ **We're glad you're here! 😊 Let's make it a great year!**

